



# MONTHLY MEMBERSHIP PROGRESS REPORT

District 323 H1

Results as of: 8/31/2015

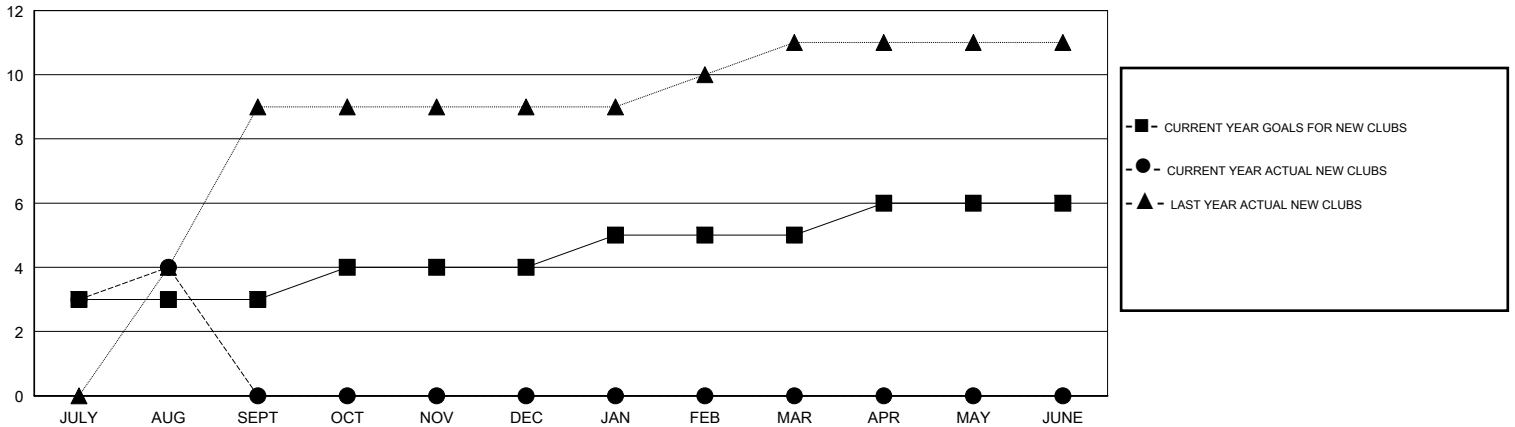
GMT: KAMLESH JAIN

LOCATION INDIA

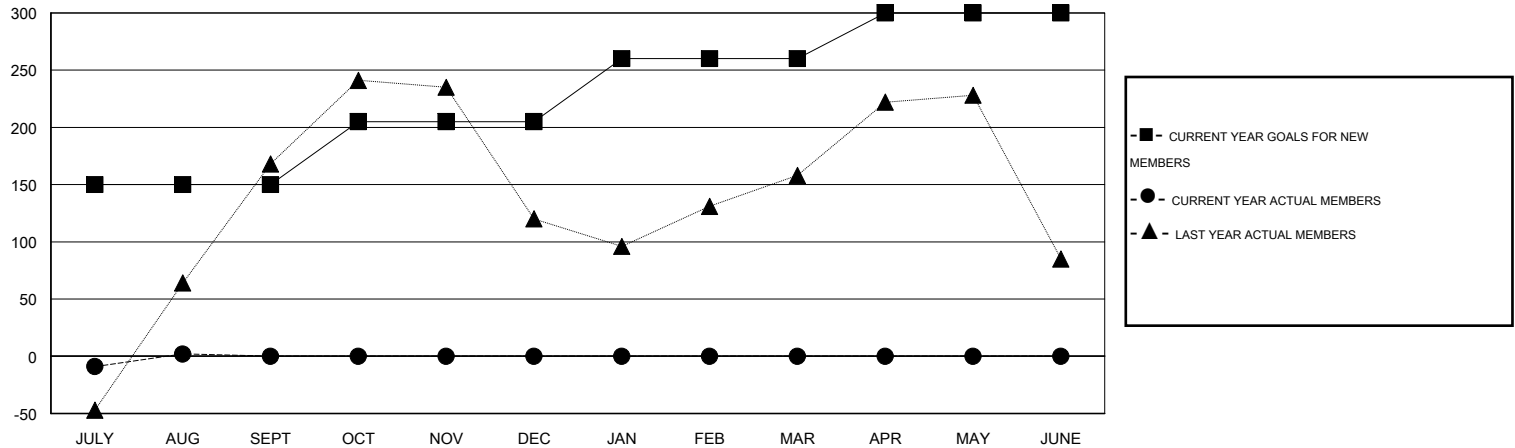
GMT CA 6

Clubs					Members				
RESULTS FOR 2015-2016					RESULTS FOR 2015-2016				
QUARTER	NEW CLUB GOAL	NEW CLUBS	DROPPED CLUBS	NET GAIN/LOSS	QUARTER	NEW MEMBER GOAL	CHARTER AND NEW MEMBERS ADDED	DROPPED MEMBERS	NET GAIN/LOSS
JULY/AUG/SEPT	3	4	0	4	JULY/AUG/SEPT	150	168	166	2
OCT/NOV/DEC	1	0	0	0	OCT/NOV/DEC	55	0	0	0
JAN/FEB/MAR	1	0	0	0	JAN/FEB/MAR	55	0	0	0
APR/MAY/JUNE	1	0	0	0	APR/MAY/JUNE	40	0	0	0

GOALS AND ACTUAL NEW CLUBS CUMULATIVE



GOALS AND ACTUAL MEMBERS CUMULATIVE



DROPPED CLUBS: 0	21 CLUBS OF 79 ADDED 1 OR MORE NEW MEMBERS	<u>GENDER DISTRIBUTION</u>	
<u>DROPPED MEMBERS</u>		MALE	1,895 (72.25%)
DECEASED	0	FEMALE	728 (27.75%)
CLUB CANCELLED	0	<u>FAMILY UNIT MEMBERS</u> 1,332	
OTHER	166	<u>HEAD OF HOUSEHOLD</u> 638	
<b>TOTAL</b>	<b>166</b>	<u>NON-HEAD OF HOUSEHOLD</u> 694	

[CLICK HERE FOR HEALTH ASSESSMENT DATA](#)